



**MAKING A DIFFERENCE, TOGETHER**

ANNUAL REPORT 2023



# CONTENTS

- 3 A message from our CEO and Boards Chair
- 4 About us
- 5 Our five-year strategic map
- 6 Case Studies
  - Türkiye and Syria
  - Sudan
  - Iran
  - Afghanistan
  - South Sudan
  - Lebanon
- 11 Creating lasting change with Relief International
- 12 Thanking our invaluable donors
- 14 2023 Financials
- 15 Get involved



# A MESSAGE FROM THE CEO AND THE BOARDS CHAIR

Dear Friends and Supporters,

Welcome to Relief International’s 2023 Annual Report. In the pages that follow, you will learn more about the impact we had together in the past year. The stories enclosed are just a snapshot of the impact we have had on millions of lives. We hope that you are proud of the change you helped accomplish this year.

Sadly, 2023 was marked by some of the greatest humanitarian challenges in the past century. The re-emergence of civil conflict in Sudan has resulted in the largest internal displacement crisis in the world today, devastating earthquakes in Syria and Türkiye killed tens of thousands of people, and the ever-climbing death toll in the Occupied Palestinian Territory sent shockwaves around the world. Protracted conflict, climate emergencies and disasters persisted unrelentingly in the 15 countries where Relief International currently operates.

As of 1 December 2023, OCHA reports that one in five children lives in a conflict zone or is forced to flee. The number of displaced people is at its highest level for a century, mainly due to conflict and climatic disasters. The prevalence of acute food insecurity affected 58 countries worldwide, exposing 258 million people to precarious living conditions. Public health emergencies came thick and fast, with cholera epidemics reported in 29 countries, endangering the lives of communities already facing many layers of complex crises. These figures stand as testament to the scale and gravity of the challenge, requiring urgent, bold, innovative action.

Our teams have risen admirably to the challenge. In 2023, Relief International provided over 11 million services, including over 7 million individual healthcare consultations. Our work enabled millions more to access essential water, sanitation and hygiene services, educational programs, and livelihood-improving opportunities. Rising to the challenge has also meant that we go where and when we are needed most. As we write this message in 2024, Craig has just returned from the Occupied Palestinian Territory, where we are proud to say that Relief International is now actively supporting communities in both Gaza and the West Bank, providing desperately needed essential services.

These results are only possible through the power of partnership. In a world of increasingly complex and interweaved crisis, we must respond in real time with the creative, collaborative mind-set necessary to make a tangible impact. No one organization alone has all the tools needed to solve the rising tide of challenges we come up against. However, partnership has enabled us to achieve collectively what we cannot achieve individually. This annual report, therefore, represents what we and our donors, supporters, and national and international partners, have achieved together.

Looking ahead to 2024 and beyond, Relief International remains steadfast in our resolve to navigate the complexities of global challenges with innovation, compassion, and a shared commitment to building a brighter, more resilient future for all. We extend profound gratitude to our dedicated supporters who stand shoulder to shoulder with us on our mission. Together, we are helping to foster health and wellbeing in communities most affected by conflict, climate change and crisis.

Together we are making a difference. Thank you for your continued partnership in 2023 and beyond.

Take care,

Craig Redmond, Chief Executive Officer | Debra Davis, Boards Chair



**Craig Redmond**  
CHIEF EXECUTIVE OFFICER

A stylized, handwritten signature in black ink.



**Debra Davis**  
BOARDS CHAIR

A handwritten signature in black ink that reads "Debra Davis".

# ABOUT US

Conflict, disasters and climate change were some of the many crises that the communities we partner with faced in 2023. Across 15 countries, Relief International staff members and volunteers, 97% of whom are local nationals, worked alongside communities to respond to these crises.

They delivered health and wellbeing programs that saved lives and helped promote long-term resilience. In total, 6,800 staff members and volunteers provided 11 million vital services across Africa, Asia and the Middle East in 2023.



## WATER AND SANITATION

447,775

people with increased access to clean water and sanitation

## EDUCATION

26,200

students provided with classes or training

## LIVELIHOODS

308,000

people with increased income from job programs

## HEALTH AND NUTRITION

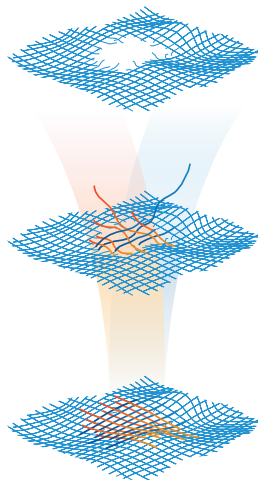
7,000,000

health consultations across 15 countries



Relief International partners with communities impacted by conflict, climate change, and disaster to save lives, build greater resilience, and promote long-term health and wellbeing.

## PARTNERSHIPS FOR GREATER RESILIENCE



### CRISIS

People living in fragile settings face complex, interconnected, and deep-rooted crises, increasingly accelerated by climate change and conflict

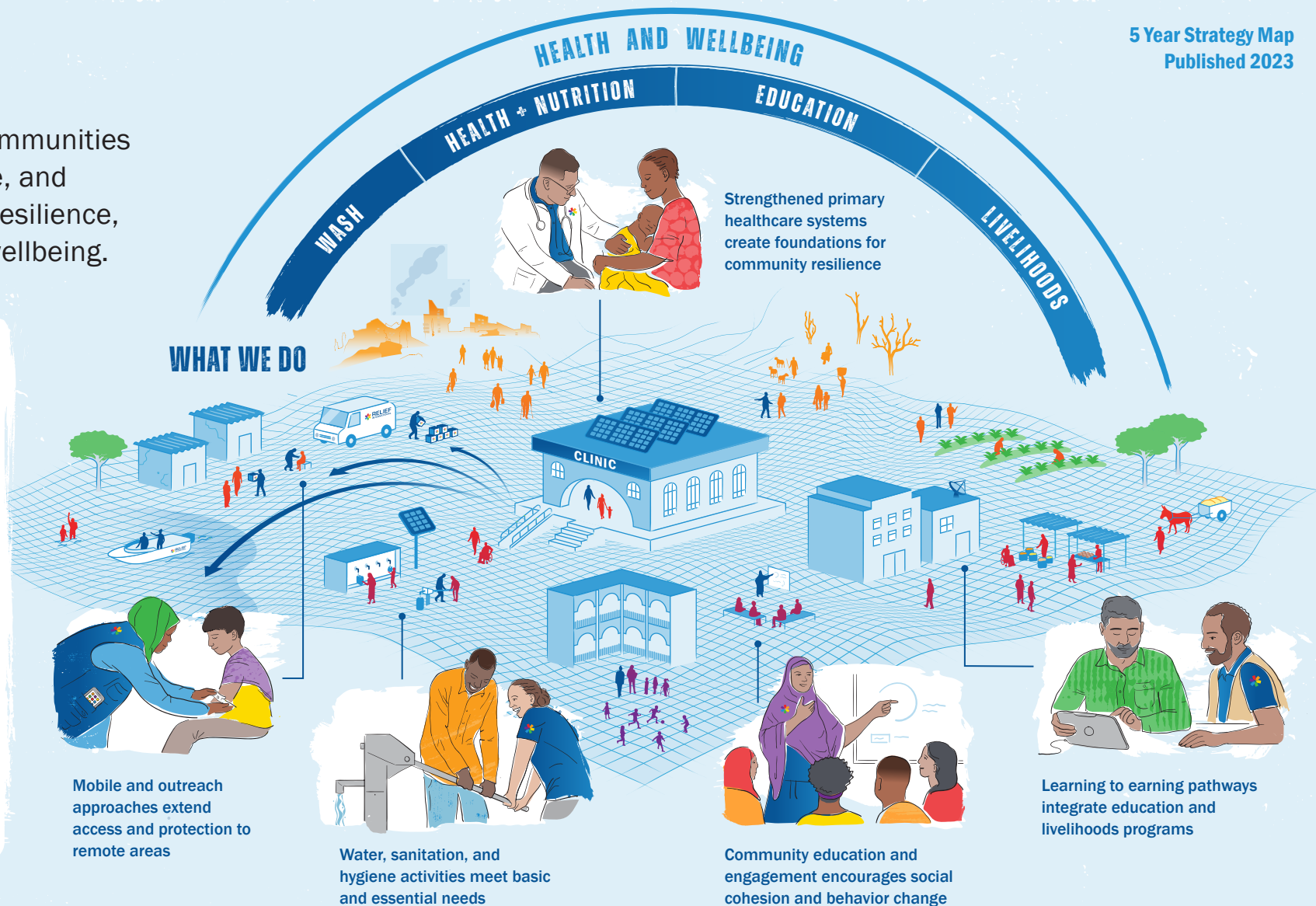
### RESPONSE

Working in partnership with local actors on humanitarian response, we focus first on critical health needs

### RESILIENCE

As communities recover, a combined focus on health and wellbeing helps reweave the social fabric, a network essential for preparedness and ultimately greater resilience

## WHAT WE DO



## CORE CAPACITIES



### Safe

We ensure that affected communities have access to safe and inclusive programming with an emphasis on protection.



### Truly Local

We work alongside communities to build resilience. We do this through investments in local staff capacity and with leadership from local partners, organizations and institutions.



### Going the Distance

We go above and beyond to ensure access to services in the hardest to reach areas amidst crisis, displacement and systems failure.



### Conflict Sensitive

We support context appropriate and ethical programming in conflict zones and challenging political environments. Our work is underpinned by community acceptance and dynamic conflict analysis.



### Climate Smart

We develop local capacity to prepare for and respond to climate shocks, with green, digital, and off grid solutions.



### Evidence Based

We invest in learning and analysis. Sound evidence informs our actions, advocacy, and drives program quality, adaptation, and innovation.

# TÜRKIYE AND SYRIA

## HELPING EARTHQUAKE SURVIVORS ON THEIR ROAD TO RECOVERY

On 6 February 2023, Türkiye and Syria were struck by a series of earthquakes which left a trail of devastation in their wake. Over 55,000 people were killed, more than 130,000 injured and approximately 15 million impacted. Despite being hugely affected themselves, Relief International staff worked around the clock to support the communities most in need.

Raneem, a tailor from Syria said, “my life changed horribly to the point that the mind cannot bear it. I lost my eldest son under the rubble. My youngest son lost his right forearm and left leg and I lost my right leg.” On top of this unimaginable suffering, Raneem’s family lost their home and everything they owned.

Working with local partner organization NSPPL, Relief International offered Raneem much-needed help including physical rehabilitation, psychological support and a prosthetic limb. She says “I dream of getting the limb. I can hardly believe I will be able to move around independently, return to my work...and be able to send my children back to school.”

Whilst these interventions are life-changing, survivors like Raneem face years of recovery ahead and Relief International will be there every step of the way to provide support and help build long-term resilience.

29,000

physical rehabilitation sessions provided for people impacted by the earthquakes across Türkiye and Syria.







# SUDAN

## SAVING LIVES IN A CONFLICT ZONE

In April 2023, millions of lives were devastated when a conflict erupted in Sudan. One of the worst impacted regions was North Darfur where Relief International has been working for 16 years. Over 450,000 people were forcibly displaced to North Darfur and there was a severe lack of life-saving food and medicine.

Working amidst the crisis, Relief International scaled up operations to provide much needed health and nutrition support. We deployed mobile clinics and expanded our services to include El Fasher Southern Hospital in North Darfur's capital city.

35-year-old Hawa was one of the hundreds of thousands of people who used our healthcare services. When Hawa went into labor, she was unable to get to hospital due to fuel shortages. Eventually her husband found a cart which they used to make the long journey to El Fasher.

When Hawa arrived, a Relief International midwife quickly took her to the delivery room and helped to deliver her baby safely. Speaking about her experience Hawa said, "I was so relieved. My life was saved. In these facilities, the health workers are heroes for pregnant women".

**840,000**

health, nutrition and  
hygiene services  
provided following  
the outbreak of the  
conflict.



# IRAN

## SUPPORTING REFUGEE SCHOOL CHILDREN TO REACH THEIR POTENTIAL

After escaping war-torn Afghanistan, Rahim and his family found refuge in a small village in Iran's Yazd Province. Despite their hardships, Rahim and his wife shared a common dream – to provide their children with an education that would help break the cycle of poverty.

Relief International was able to support their six-year-old son Erhsan by enrolling him in our School Readiness Program which is specifically

designed to help Afghan refugee children overcome barriers to education. With each passing month, Erhsan gained confidence surpassing all expectations. His mother joyfully shared, “Ehsan started to read storybooks in Farsi! We were so shocked and happy about this!”

Erhsan's story serves as a reminder that with the right opportunities, every child can unleash their true potential.

**1,500**

Afghan children  
supported by Relief  
International's School  
Readiness Programs.







# AFGHANISTAN

## PROVIDING CRITICAL HEALTHCARE FOR REMOTE COMMUNITIES

In Afghanistan, decades of conflict, recurring natural disasters and the collapse of infrastructure have made accessing healthcare very difficult, especially for remote communities. In the mountainous district of Shotoi in Panjshir province, Relief International operates the only healthcare clinic serving over 12,000 people.

Resident Noor who lives a long distance from the clinic said, “we do not have transport, which is challenging, particularly during the winter when it snows.” However thanks to the clinic’s ambulance service, Noor was able to

access treatment when she started experiencing pain during her pregnancy. She is now mother to twin boys and is expecting her third baby.

The clinic’s health workers truly go above and beyond to help people living in remote communities. Health worker Hamza cycles to administer vaccines to families living in the mountains. At times when he can’t travel by bike due to snowfall, he walks to reach his patients.

80

health facilities across Afghanistan provided life-saving interventions and enhanced the overall health and wellbeing of remote communities.



# SOUTH SUDAN

## PROVIDING VITAL HEALTH AND NUTRITION SUPPORT FOR REFUGEES

At the start of 2023, over three quarters of South Sudan's population were in need of humanitarian assistance and protection as a result of ongoing instability and a lack of food. The situation became even worse after the Sudanese conflict erupted in April with over 450,000 refugees and returnees crossing the border into South Sudan.

Many families walked for weeks in search of safety without enough food and water, and when they finally reached the Upper Nile State of Maban, they found densely packed refugee camps where there were not

enough supplies to go around. Diseases such as malaria and measles were rife as a result of poor hygiene facilities and the impacts of climate change.

Relief International was the only organisation in the county providing critically needed health and nutrition services for people fleeing the conflict and existing refugees. Our teams on the ground worked around the clock to provide vital lifesaving primary health care and support for acutely malnourished children under five as well as pregnant and lactating women.

132,000

primary healthcare  
and nutrition services  
provided to returnees  
and refugees in  
Maban.







# LEBANON

## SUPPORTING SMALL BUSINESSES TO SCALE-UP

Lebanon was a country in crisis in 2023. The economy and food security declined whilst unemployment and poverty rates rose. Against this backdrop, Relief International worked to improve the resilience of Lebanese and Syrian refugee communities by supporting small businesses to scale-up.

27-year-old Nouthaiba took on a lot of responsibility after her mother had an accident, including cooking for her parents and five siblings. Eventually this led to Nouthaiba setting up her own business selling foods that have been pickled and fermented using traditional methods known as 'Mooneh'.

She soon wanted to expand, but did not know how. Relief International's livelihoods project provided the answer, supporting Nouthaiba with technical training and guidance. She received resources and equipment, including a cow so that she could control milk production – a key ingredient for several of her foods.

Nouthaiba went on to employ several people from her local community. She said, "recently we have expanded so you can find my products in local supermarkets." She continued, "in the future, I would like to have my own shop in different countries labeled with my brand's name."

**500**

people in need, including women, young people and small-scale farmers received training, apprenticeship opportunities and career counselling.

# CREATING LASTING CHANGE WITH RELIEF INTERNATIONAL

## \$1,000 CAN PROVIDE

- ▶ An ambulance service for one month in Afghanistan
- ▶ 3 households with enough food for 3 months in Yemen
- ▶ 3 community peace sessions in the Philippines
- ▶ 7 children with life-saving hospital care in Myanmar
- ▶ 20 days of training for a farmer in Lebanon, including the provision of seeds, fertilizers, tools and animal feeds
- ▶ 100 schoolgirls with a washroom and handwashing point in Pakistan
- ▶ Life-saving medical equipment, such as an ECG scan, in Yemen





# THANKING OUR INVALUABLE DONORS

We would like to thank Chip Levengood for his invaluable contributions to Relief International, serving as board chairperson for thirteen years from 2010 to 2023. Chip has taken up the roles of Director and Trustee at Relief International, as we welcome our new board chairperson, Debra Davis.

Chip says, “I have watched Relief International go from strength to strength over the past 13 years as Chairperson. It is humbling to see that in 2023, staff provided more than 7 million healthcare consultations across 15 countries. This simply would not have been possible without the organisation’s invaluable donors.

“Staff truly go above and beyond and they are able to go on making a difference thanks to you. As Relief International continues to partner with communities to save lives, build greater resilience and improve long-term health and wellbeing, we will see the impact of your support for years to come.”



## PRESIDENT’S COUNCIL (\$50,000+)

*President’s Council members are our most dedicated partners for change who have made an exceptional commitment to help us respond to the world’s worst humanitarian crises.*

Bader Philanthropies

Dave Hardman

Echo Fund

Henry L. Kimelman Family Foundation

## FOUNDATIONS AND PARTNERS

Alight

Australian Embassy Tehran

Australian Government Department of Foreign Affairs and Trade

U.S. Department of State – Bureau of Population, Refugee and Migration

Center for Disaster Philanthropy

Deutsche Gesellschaft für Internationale Zusammenarbeit (GIZ)

Directorate-General for European Civil Protection and Humanitarian Aid Operations (ECHO)

Directorate-General for International Partnerships (formerly DG DEVCO)

Embassy of Japan in Iran

Foreign, Commonwealth and Development Office

German Federal Foreign Office

Humanity & Inclusion

International Organization for Migration (IOM)

Italian Agency for Development Cooperation (AICS)

King’s College London

Le conseil départemental du Rhône

Ministry of Foreign Affairs of Denmark (DANIDA)

MOPH Ministry of Public Health Afghanistan

Solidarités International Start Network

Swiss Agency for Development and Cooperation

Takeda Pharmaceutical Company Limited

The Church of Jesus Christ of Latter-day Saints

U.N. Children’s Fund

U.N. High Commissioner for Refugees

U.N. Office for the Coordination of Humanitarian Affairs

U.N. Office for Project Services

U.N. Population Fund

United Nations Development Program (UNDP)

University of New South Wales – UNSW

U.S. Agency for International Development

USAID’s Bureau of Humanitarian Affairs

World Bank

World Food Programme World Health Organization

## LEADER’S COUNCIL (\$15,000 – \$49,999)

*Leader’s Council members are key investors in the communities impacted by conflict, disaster and climate change where we work.*

Adam Richard

Ellen Frost

Faisel Khan

Kay Family Foundation

Sempra Foundation

The Shurl and Kay Curci Foundation

# 2023 FINANCIALS

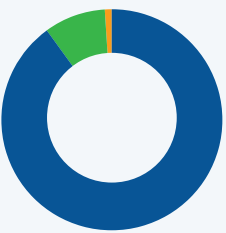
## 2023 COMBINED FINANCIALS

Support and Revenue	2023	2022
Grants and contributions	\$ 149,711,148	\$ 149,711,148
Contributed goods and services	\$ 15,677,938	\$ 15,677,938
Other Revenue	\$ 2,774,931	\$ 2,774,931
<b>Total Support and Revenue</b>	<b>\$ 168,164,017</b>	<b>\$ 157,339,912</b>
Expenses	2023	2022
Program and Services	\$ 154,270,786	\$ 142,888,860
General and administrative	\$ 14,673,312	\$ 14,152,216
Fundraising	\$ 463,346	\$ 316,694
<b>Total Expenses</b>	<b>\$ 169,407,445</b>	<b>\$ 157,357,770</b>
Increase(decrease) in net assets	\$ (1,243,427)	\$ (17,858)
Net assets beginning of the year	\$ 3,475,369	\$ 3,493,227
<b>Net assets end of the year</b>	<b>\$ 2,231,941</b>	<b>\$ 3,475,369</b>

\*2023 Combined Financials are unaudited figures, and subject to change

## Total Expenditure

TOTAL \$157,357,770

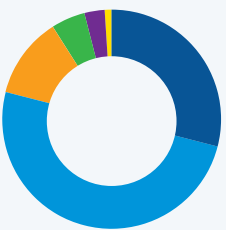


90.06%  
8.66%  
0.27%

PROGRAMS AND SERVICES  
GENERAL AND ADMINISTRATIVE  
FUNDRAISING

## Program Expenditure

TOTAL \$142,888,860

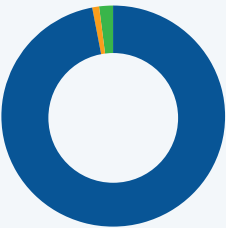


29.03%  
50.16%  
12.23%  
5.87%  
2.6%  
0.12%

HEALTH  
MULTI-SECTORAL  
OTHER  
ECONOMIC OPPORTUNITY  
EDUCATION  
WASH

## 2022 Funding Sources

TOTAL SUPPORT AND REVENUE \$157,339,912



98.35%  
0.62%  
1.03%

PROGRAMS AND SERVICES  
GENERAL AND ADMINISTRATIVE  
FUNDRAISING



# GET INVOLVED



### DONATE

Make an annual gift to Relief International at the Patrons or Council level to invest in long-term change.

[ri.org/membership](https://ri.org/membership)

### SIGN UP

Sign up for our newsletter to be the first to hear about how we're partnering with communities impacted by conflict, disaster and climate change.

[ri.org/subscribe](https://ri.org/subscribe)

### FUNDRAISE

Start your own fundraising campaign to support Relief International.

For more information, contact:

[philanthropy@ri.org](mailto:philanthropy@ri.org)

### SHARE

Follow us on social media to get real-time alerts from our teams on the ground – and share these updates with your followers to raise awareness.

X @reliefIntl

f @reliefinternational

@ @reliefintl

in @relief-international

### JOIN OUR TEAM

We're always on the lookout for talented professionals to join our team. Whether you work in programs, or in finance, operations, or another area, you'll be a significant part of our mission to build greater resilience, and promote long-term health and wellbeing around the world.

[ri.org/work-with-us](https://ri.org/work-with-us)

[www.ri.org](https://www.ri.org)

#### Relief International, Inc

+1 (202) 639-8660  
[info@ri.org](mailto:info@ri.org)  
1101 14th St. NW  
Suite 710  
Washington, D.C. 20005  
United States

#### Relief International-UK

+44 (0) 2037016806  
[info@ri.org](mailto:info@ri.org)  
4th Floor  
35–41 Lower Marsh  
London SE1 7RL  
United Kingdom

#### Relief International-France

(+33) 4 78 40 32 08  
[info@ri.org](mailto:info@ri.org)  
21 Rue de la Vanne,  
92120 Montrouge  
France

#### Relief International-Europe

[info@ri.org](mailto:info@ri.org)  
Rue du Commerce 31  
1000 Brussels