

A Relief International health center provided malnutrition treatment for Basma's* infant triplets in a remote region of Syria.
*Name changed to protect identity.
(Photo credit: Frontline in Focus)



Strengthening the health of communities, together

ANNUAL REPORT 2025



Contents

A message from the Interim CEO and Boards Chair	3
Five-year strategic map	4
2025 impact at a glance	5
Our work around the world	6
Sudan	6
Chad	7
Gaza	7
Myanmar	8
Türkiye	8
Syria	9
Partnering for impact.....	10
2025 financials	12
Get involved.....	13



*A nurse supports a mother and her newborn
in Batil refugee camp, South Sudan.*

A message from the Interim CEO and Boards Chair



VALERIE DOCHER
INTERIM CHIEF
EXECUTIVE OFFICER



DEBRA DAVIS
BOARDS CHAIR

Dear Relief International Community,

Since our founding in 1990, our team, our partners, and the communities we serve have endured numerous and complex challenges. However, 2025 ranks among the most difficult years on record.

The year began with sudden and unprecedented cuts to global humanitarian aid, causing massive challenges for Relief International and other actors to operate at required scale in multiple locations. This came at a time when crises were — and still are — worsening, with over 300 million people in need of humanitarian assistance globally.

This critical disruption to our sector was compounded by a large increase in hostilities and violence toward humanitarian workers in conflict-affected regions. In April, 11 of our team members in Zamzam refugee camp, Sudan, were tragically killed while providing life-saving healthcare to communities displaced by fighting. The doctors, nurses, and support staff who lost their lives on that day, and the others killed during their duties in 2025, will be remembered with honor and respect.

In the face of these major crises, Relief International's local teams remained steadfast in our mission to partner with communities around the world to meet critical needs, help build greater resilience, and promote long-term health and wellbeing. We delivered emergency care and services for families impacted by conflict in Gaza, Sudan, South Sudan, and Chad, responded to disasters in Myanmar and the Philippines, and supported hard-to-reach, underserved communities in Syria, Afghanistan, and beyond.

In 2025, we provided more than 20 million vital services across 15 countries, including over 8 million health consultations.

Within dynamic environments, we consistently adapted and implemented innovative, locally-driven solutions to foster sustainable progress. Among other efforts, these initiatives included exploring the potential of artificial intelligence to enhance local health systems and developing a scalable approach for increasing the climate resilience of health facilities.

We are immensely grateful to all who stood with us during both challenging and impactful moments in 2025. As we step into a new year, we look forward to working together to strengthen our efforts and continue making a real, long-lasting difference. Now, more than ever, the world needs supporters like you and organizations like Relief International.

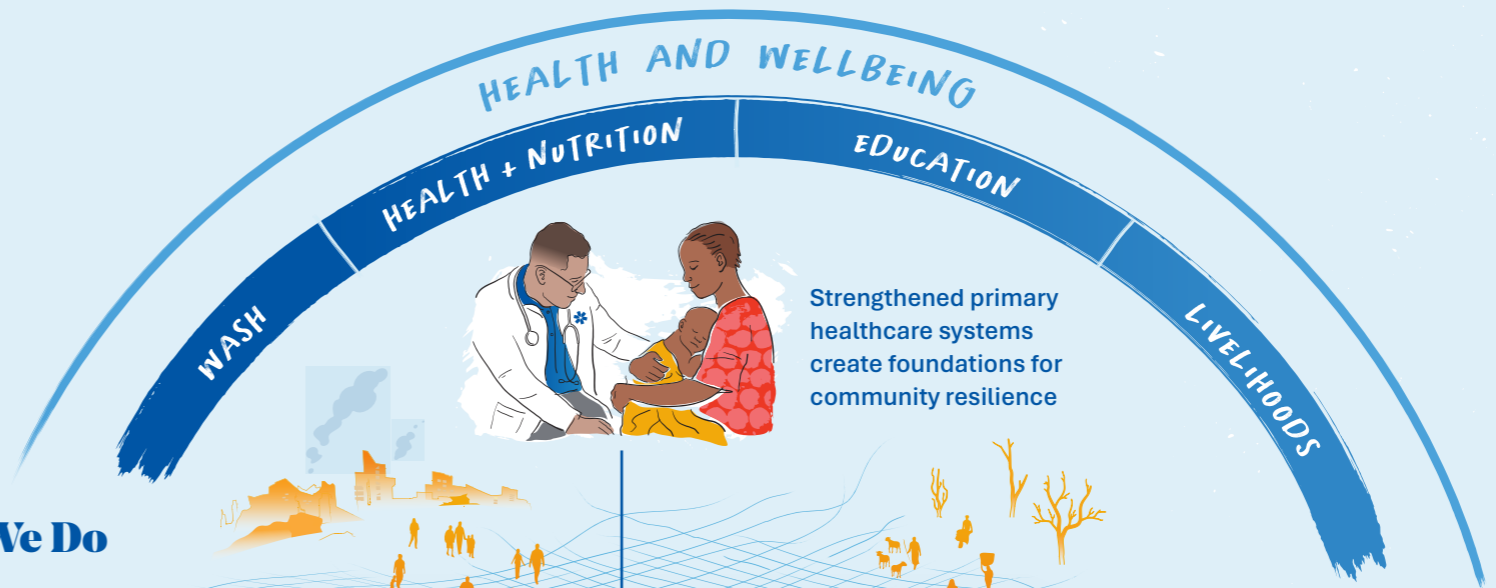
With appreciation,

VALERIE DOCHER
INTERIM CHIEF EXECUTIVE OFFICER

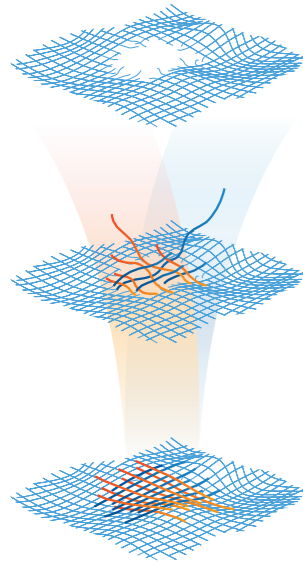
DEBRA DAVIS
BOARDS CHAIR

Five-year strategic map

Relief International partners with communities impacted by conflict, climate change, and disaster to save lives, build greater resilience, and promote long-term health and wellbeing.



Partnerships for Greater Resilience



CRISIS

People living in fragile settings face complex, interconnected, and deep-rooted crises, increasingly accelerated by climate change and conflict

RESPONSE

Working in partnership with local actors on humanitarian response, we focus first on critical health needs

RESILIENCE

As communities recover, a combined focus on health and wellbeing helps reweave the social fabric, a network essential for preparedness and ultimately greater resilience

What We Do



Mobile and outreach approaches extend access and protection to remote areas

Water, sanitation, and hygiene activities meet basic and essential needs

Community education and engagement encourages social cohesion and behavior change

Learning to earning pathways integrate education and livelihoods programs

Core Capacities



SAFE

We ensure that affected communities have access to safe and inclusive programming with an emphasis on protection.



TRULY LOCAL

We work alongside communities to build resilience. We do this through investments in local staff capacity and with leadership from local partners, organizations and institutions.



GOING THE DISTANCE

We go above and beyond to ensure access to services in the hardest to reach areas amidst crisis, displacement and systems failure.



CONFLICT SENSITIVE

We support context appropriate and ethical programming in conflict zones and challenging political environments. Our work is underpinned by community acceptance and dynamic conflict analysis.



CLIMATE SMART

We develop local capacity to prepare for and respond to climate shocks, with green, digital, and off grid solutions.



EVIDENCE BASED

We invest in learning and analysis. Sound evidence informs our actions, advocacy, and drives program quality, adaptation, and innovation.

Published 2023

2025 impact at a glance

Our team of 6,700 staff members and volunteers — 98% of whom are local nationals — partnered with communities affected by conflict, climate change, and disaster across 15 countries. Through our truly local approach that means our programs are deeply embedded in communities and rooted in shared realities, we ensured individuals and families in some of the world's hardest-to-reach regions have the ability and tools to shape their own futures.



Children in Pakistan take part in a supportive group session facilitated by Relief International.

Together we provided more than

20 MILLION

vital services to save lives, help build resilience, and promote long-term health and wellbeing

8 MILLION+

Water, sanitation, and hygiene services were implemented to improve access to safe and healthy living conditions

300,000+

Children under five were reached with nutrition specific interventions

85,000+

Women were supported by a skilled health worker during childbirth

1,000+

Health facilities were supported with resources, including 36 mobile clinics to reach underserved communities

7

Countries where emergency responses were delivered: Gaza, Yemen, Sudan, South Sudan, Chad, the Philippines, and Myanmar

A displaced child is screened for malnutrition by a Relief International health worker in Tawila, Sudan.

Our work
around
the world

SUDAN

6

Using telehealth to provide critical care for conflict-affected communities

The war in Sudan is marked by widespread destruction and catastrophic suffering. Since April 2023, it is estimated that approximately 150,000 lives have been lost, and over 12.5 million people have been displaced.

Despite an increasingly volatile environment, we continued to deliver life-saving healthcare in 2025. Through 80 static and mobile health facilities, we provided critical services such as treating injuries, supporting newborn births, and providing nutrition supplies. In hard-to-reach areas like Melit, Tine, and Malha in North Darfur, we were the only organization supporting communities in dire need.

To further strengthen care in locations isolated by conflict, we partnered with UK-Med's network of global specialists to provide local health workers with remote training and advice.

“We are skilled clinicians, but without resources and access to specialists, our capacity is limited. This telehealth approach with UK-Med bridges this gap. The knowledge will stay with us long after the project ends.”

SAFANA
A RELIEF INTERNATIONAL
DOCTOR IN AL MANAGIL,
A RURAL LOCALITY IN SUDAN

The rehabilitated health facility where Relief International's partnership with UK-Med was utilized.

630,000

healthcare consultations
provided across
80 facilities



CHAD

Emergency healthcare for displaced families at the Sudanese border

The ongoing conflict in Sudan pushed neighboring Chad further into crisis in 2025. Insecurity at the border continued, with tens of thousands of refugees and returnees arriving after fleeing for their lives. Critical needs, overcrowding, and the risk of disease increased daily.

Host communities in Eastern Chad — who were already living in extreme poverty before the war — were also impacted. Cross-border supply chains

were disrupted, and prices of staple foods increased sharply.

Providing much-needed refuge, Relief International operated a health center at the border in Tiné to deliver life-saving care and services for families arriving in dire need.

Among a range of essential services, we provided malnutrition treatment, immunizations, and psychosocial support.



25,000

vital health services provided at the Sudanese border

A woman and her son at a Relief International clinic in Tiné.



A displaced mother who lives in a tent in Khan Younis accesses support for her newborn.

1,600

women supported by a skilled health worker during birth

GAZA

Expanding services for mothers and children facing unimaginable circumstances

Gaza remained in the grip of catastrophe in 2025, with families fighting to survive relentless violence and a severe lack of basic supplies. Together with our local partners, Relief International delivered vital health, nutrition, and psychosocial services, even in the most challenging circumstances.

This included supporting Al-Awda's hospital in Nuseirat to operate the only nutrition center in central Gaza at

the time, and to establish a dedicated children's ward in September — delivering critical treatment for the rising number of malnourished and seriously ill children.

Among other services, we also continued to facilitate safe spaces for children and their caregivers to process trauma, and provided hundreds of winter kits for mothers and their newborns who were sheltering in tents.

54,000

essential services delivered in response to the earthquake



A child friendly space provided by Relief International helps young children to cope through crisis.

MYANMAR

Partnering with local communities to deliver essential post-earthquake support

In March 2025, a powerful 7.7 magnitude earthquake struck Myanmar, followed by a 6.4 magnitude aftershock, causing widespread devastation across Mandalay, Sagaing, Naypyitaw, Bago, and Shan State.

In coordination with local stakeholders, we rapidly mobilized to support communities whose homes had been destroyed — many of them already impacted by conflict, extreme weather such as flooding and landslides, and displacement.

After consulting with communities to determine their greatest needs,

we delivered a range of emergency support including the deployment of mobile medical units, sanitation interventions, and cash services for specific needs like water and shelter. We also provided psychosocial sessions, disease prevention training, and child friendly spaces which promoted the importance of play for children impacted by crisis.

TÜRKIYE

Using gaming to transform rehabilitation for people with disabilities

As a leading advocate for people with disabilities in Türkiye, many of whom are Syrian refugees severely injured by conflict, Relief International continued to deliver a comprehensive rehabilitation program throughout 2025. Working in partnership with local organizations, we supported people to rebuild their lives through prosthetics and orthotics, assistive technologies, physiotherapy, and psychosocial sessions.

Recognizing that traditional rehabilitation can sometimes feel repetitive or overwhelming, we integrated interactive gaming technology into our approach. By turning physical therapy into an immersive and stress-free experience, Nintendo Switch-based exercises helped patients to stay motivated, consistent, and confident in their recovery.

“With my prosthesis and rehabilitation, I regained my independence — and returned to my studies and work.”

HISHAM
A SYRIAN REFUGEE WHO REBUILT HIS LIFE AFTER LOSING HIS LEG DURING THE WAR

A Relief International specialist supports a child to use gaming for rehabilitation and recovery.



5,000

rehabilitation sessions delivered

SYRIA

Implementing sustainable, locally-managed water sources

In collaboration with International Relief Teams and local community members, we strengthened the foundations of public health in the town of Saida, Syria, where years of conflict, failing infrastructure, and power shortages have left families with access to water only every two or three weeks.

We installed solar-powered systems on three municipal wells, establishing a reliable hybrid energy source that keeps water flowing even during frequent power cuts. The wells now supply around 70 percent of the town's water, including the local health center, while continuous chlorination ensures that water is safe.

By working closely with the municipality and training local technicians to maintain these new systems, this sustainable, locally-managed solution is helping to improve community wellbeing and build resilience for years to come.

7,000

people reached with clean water from solar-powered wells

Ahmad, Senior Water, Sanitation, and Hygiene (WASH) Officer at the site of the new solar-powered water systems in Saida.



Partnering for impact

The generous support of individuals, foundations, corporations, and institutions enables Relief International's critical work to partner with communities to save lives, help build greater resilience, and improve long-term health and wellbeing.

We are grateful to our global community for coming together in 2025 to make a meaningful difference for individuals and families across Africa, Asia, and the Middle East.

Using artificial intelligence (AI) to unlock health insights with Amazon Web Services

With the support of Amazon Web Services through the AWS IMAGINE grant, Relief International and Weavery AI launched a new effort to help strengthen health systems in South Sudan.

The initiative will see local health workers utilize AI to convert handwritten records into digital datasets — ultimately enabling key health trends to be identified and improving outcomes in one of the world's most fragile contexts.

Our aim is that the intervention will generate easily analyzed information at scale, enabling better insight, resource allocation, and treatment at a local and national level.

Following the successful development of the bespoke technology HERA (handwritten to electronic record automation) in 2025, we are excited for this approach to be piloted and implemented in 2026 and beyond.

Improving climate resiliency of health facilities with the Henry L. Kimelman Family Foundation

Together with the Henry L. Kimelman Family Foundation, Relief International is developing and implementing a replicable model for sustainable infrastructure improvements that enhance preparedness, safety, accessibility, and quality of care for vulnerable communities facing the growing burdens of climate change.

With the Foundation's support in 2025, Relief International collaborated with community stakeholders in the Nimroz province of Afghanistan to assess and prioritize key resilience upgrades in local health facilities. These upgrades — including solar power systems, cooling and ventilation mechanisms, as well as water tanks and filtration — will improve patient safety and staff conditions, increase energy reliability, avoid medicine wastage, and reduce emissions.

The Foundation's continued investment in 2026 will expand this initiative to health facilities in South Sudan.



A health consultation being delivered in Myanmar as part of Relief International's emergency response.

Delivering vital services in challenging contexts with the Directorate General for Civil Protection and Humanitarian Aid Operations (DG-ECHO)

Since 2009, Relief International and the European Commission's DG-ECHO have collaborated to alleviate the suffering of crisis-affected populations around the world.

Today in Gaza, Syria, Sudan, Eastern Chad, as well as hard-to-reach areas of South Sudan, Türkiye, Southern Yemen and beyond, we are working alongside local communities to provide vital services in some of the world's most challenging contexts.

In 2025 alone, this partnership made a difference to the lives of tens of thousands of people by expanding access to primary and secondary healthcare. We look forward to strengthening this impact even further for years to come.



Youth leaders from Tuca, Madamba, Lanao del Sur in the Philippines participate in a training session. (Photo credit: Joenathan Combis)

Transforming medical supply chains in conflict-affected countries with Takeda

In 2025, we continued to implement an innovative project improving access to quality medicines and medical supplies within conflict-affected settings, with funding from Takeda Pharmaceutical Company Limited's Global CSR Program.

The first phase focused on Afghanistan and Yemen, where five selected suppliers in each country are receiving extensive technical support from Relief International and our implementing partner, Quamed. This support will culminate in quality audits assessing the suppliers' adherence to World Health Organization (WHO) quality standards and their readiness to strengthen local supply for humanitarian actors.

The project will expand to Chad and Syria in 2026, with the aim of continuing to strengthen medical supply chains and support local communities in crisis settings.

Delivering wide-reaching impact with the United Nations

Among many more programs, we delivered primary healthcare and emergency responses in Lebanon, locally led psychosocial support for women refugees and host communities in Iran, and food supplements to malnourished children in Yemen.

We are deeply grateful for our partnership with the UN which continues to have long-lasting impact for communities across the world.

Empowering women to lead with support from the European Commission

In several conflict-affected areas of the Philippines, women continue to face violence, exclusion from decision-making, and limited access to resources. Strengthening their participation in peacebuilding and local governance is key to more inclusive and resilient communities, especially in the most vulnerable and remote areas.

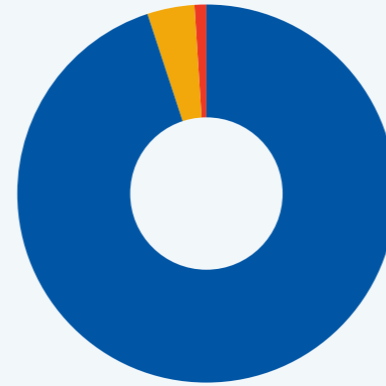
Funded by the European Commission through the Directorate General for International Partnerships (DG-INTPA), Relief International is implementing a bold three-year initiative supporting the Philippine National Action Plan on Women, Peace, and Security.

In collaboration with two long-time partners — the Balay Mindanaw Foundation, Inc. and the Coalition for Bicol Development — our project promotes women's leadership, strengthens protection mechanisms, and supports both local authorities and civil society to integrate gender-responsive approaches.

2025 financials

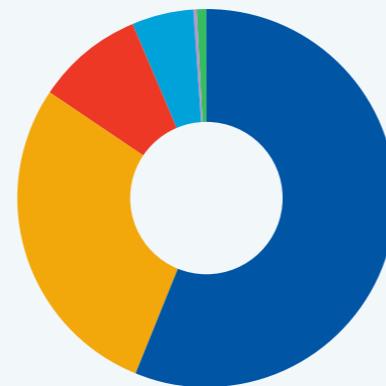
2025 COMBINED FINANCIALS

SUPPORT AND REVENUE	2025
Grants and contributions	\$105,178,686
Contributed goods and services	\$9,342,289
Other revenue	\$1,802,653
Total support and revenue	\$116,323,628
<hr/>	
EXPENSES	2025
Program and services	\$107,221,728
General and administrative	\$8,742,118
Fundraising	\$372,670
Total expenses	\$116,336,515
<hr/>	
Increase (decrease) in net assets	-\$12,887
Net assets beginning of the year	\$2,334,564
Net assets end of the year	\$2,321,676



2025 FUNDING SOURCES

94.31%	Institutional donors
4.64%	Individuals, foundations, and corporations
1.04%	Income-earning projects

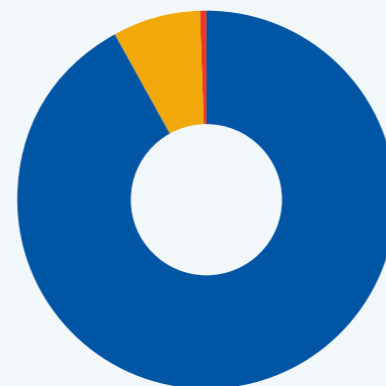


PROGRAM EXPENDITURE

56.27%	Multi-sector	5.21%	Economic opportunity
28.36%	Health	0.49%	Education
9.06%	Other	0.60%	WASH

TOTAL EXPENDITURE

92.17%	Program and services
7.51%	General and administrative
0.32%	Fundraising



Get involved

Donate

Join Relief International's mission — partnering with communities impacted by conflict, climate change, and disaster to save lives and help build long-term resilience. Donate today to help us make a real, long-term difference.

ri.org/donate

Partner with us

Strong partnerships are central to our work of delivering lasting change. If you, your organization, or your company are interested in collaborating, please contact us at:

info@ri.org

Sign up

Sign up for our newsletter to be the first to hear about news and impact from the ground.

ri.org/subscribe

Share

Follow us on social media to get real-time alerts.

 [@reliefinternational](https://www.facebook.com/reliefinternational)

 [@reliefintl](https://www.instagram.com/reliefintl)

 [@relief-international](https://www.linkedin.com/company/relief-international)

Relief International, Inc

(+1) 202 639-8660
info@ri.org

1717 K Street NW, Suite 900
Washington D.C. 20006
United States

Relief International-UK

(+44) 203 701 6806
info@ri.org

107 Cheapside
London EC2V 6DN
United Kingdom

Relief International-France

(+33) 4 78 40 32 08
info@ri.org

Accélérateur 21, 21 Rue de la Vanne
92120 Montrouge
France

www.ri.org